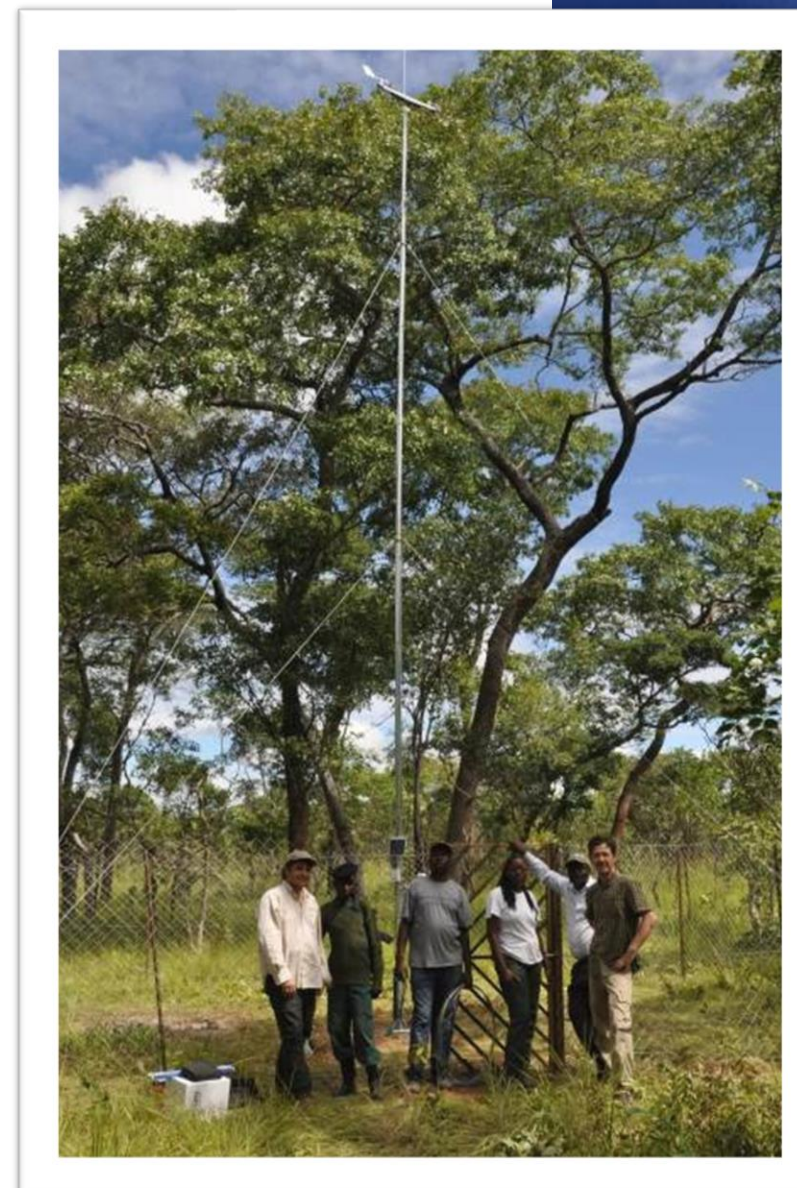
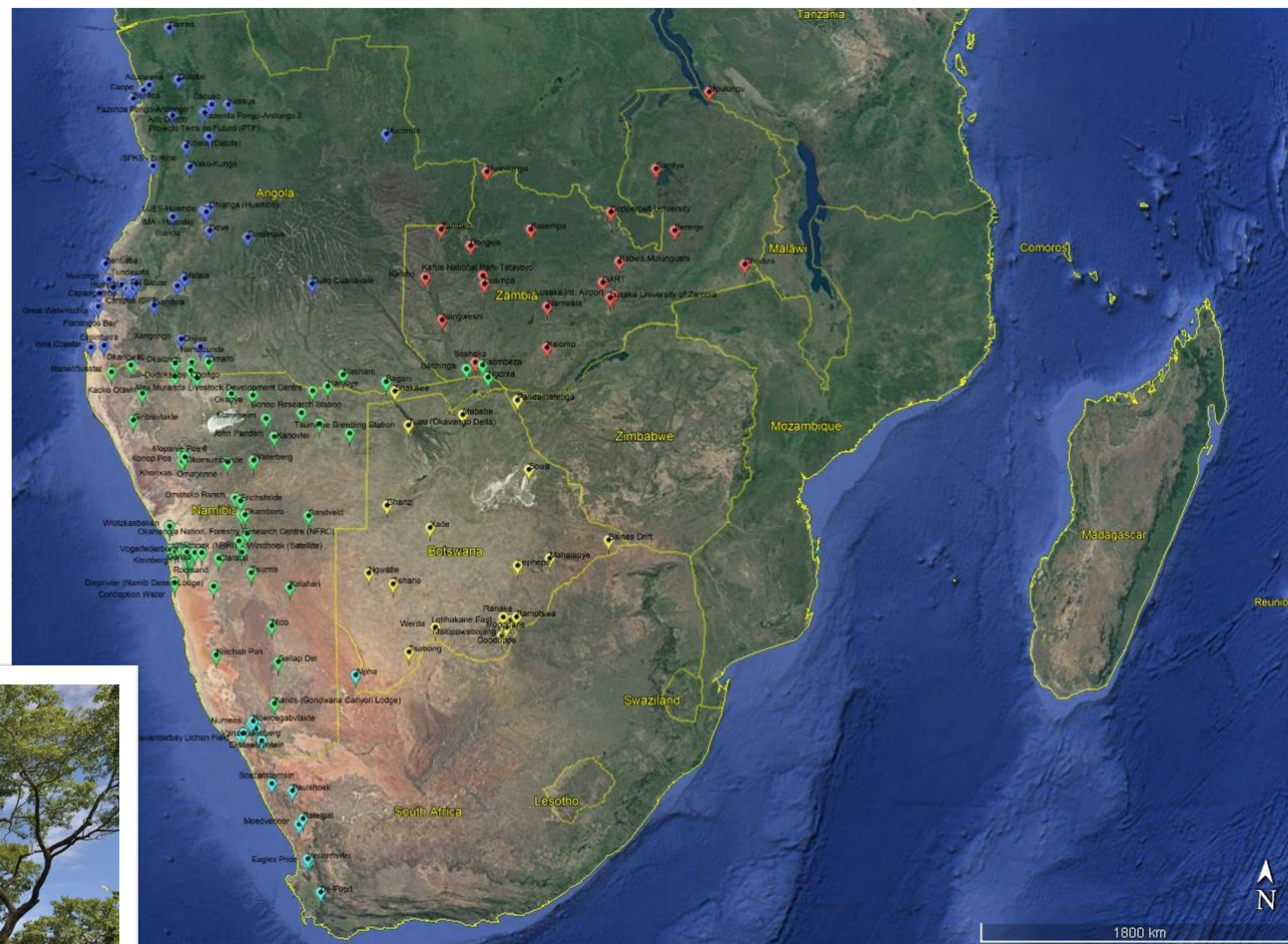


## INTRODUCTION

Countries in the Southern African Development Community (SADC) are prone to the negative impacts of notable changes in climate/weather as predicted by GCMs. To develop mitigation and adaption strategies, governments at varying levels require reliable and high-quality data to inform decision-making. For the region, however, there is limited availability and access to data on climatic observations.

## SASSCAL WEATHERNET – Station Network

- Network of 160 Automatic Weather Stations in SASSCAL countries
- Technical Collaboration with INAMET, Tundavala (ISPT) (Angola), Department of Meteorological Services (Botswana), Ministry of Agriculture, Water, & Land Reforms (Namibia), Zambia Meteorological Department (ZMD), Stellenbosch University, South Africa
- Systematic collection and processing of weather data: rainfall, air and soil temperature, humidity, wind speed and direction, barometric pressure, solar radiation, leaf wetness, fog, dew point, soil moisture
- Near real-time (hourly)
- Timeseries data spanning up to 10 years



## SASSCAL WEATHERNET – Online Platform

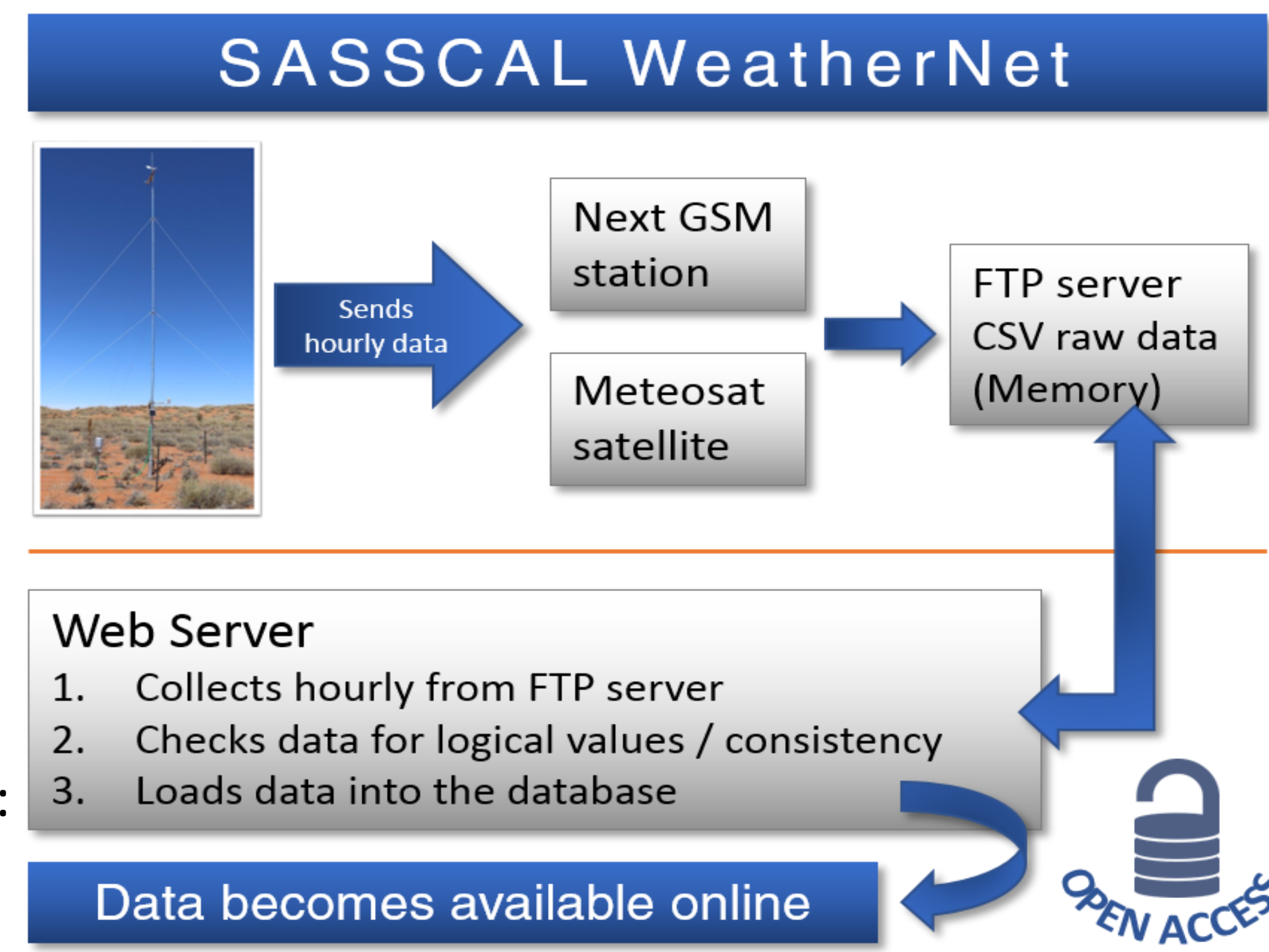
Free and open-access data:

- Public Website: <http://sasscalweathernet.org>
- ❑ Stations Overview
- ❑ Station Information & Data Sheets
- ❑ Hourly/Daily/Monthly Values Sheets
- ❑ Data Request/Data Download
- ❑ Rainfall Summaries
- Restricted administrative backend for data quality management, process control, and system administration
- Open source web and database technologies: MySQL, PHP, HTML, CSS, and JavaScript

### Quick Stats:

- 3122 total users
- 55 Email subscribers
- Visitors from Africa, Europe, Americas, and Asia

## DATA COLLECTION & TRANSMISSION



3 time intervals:

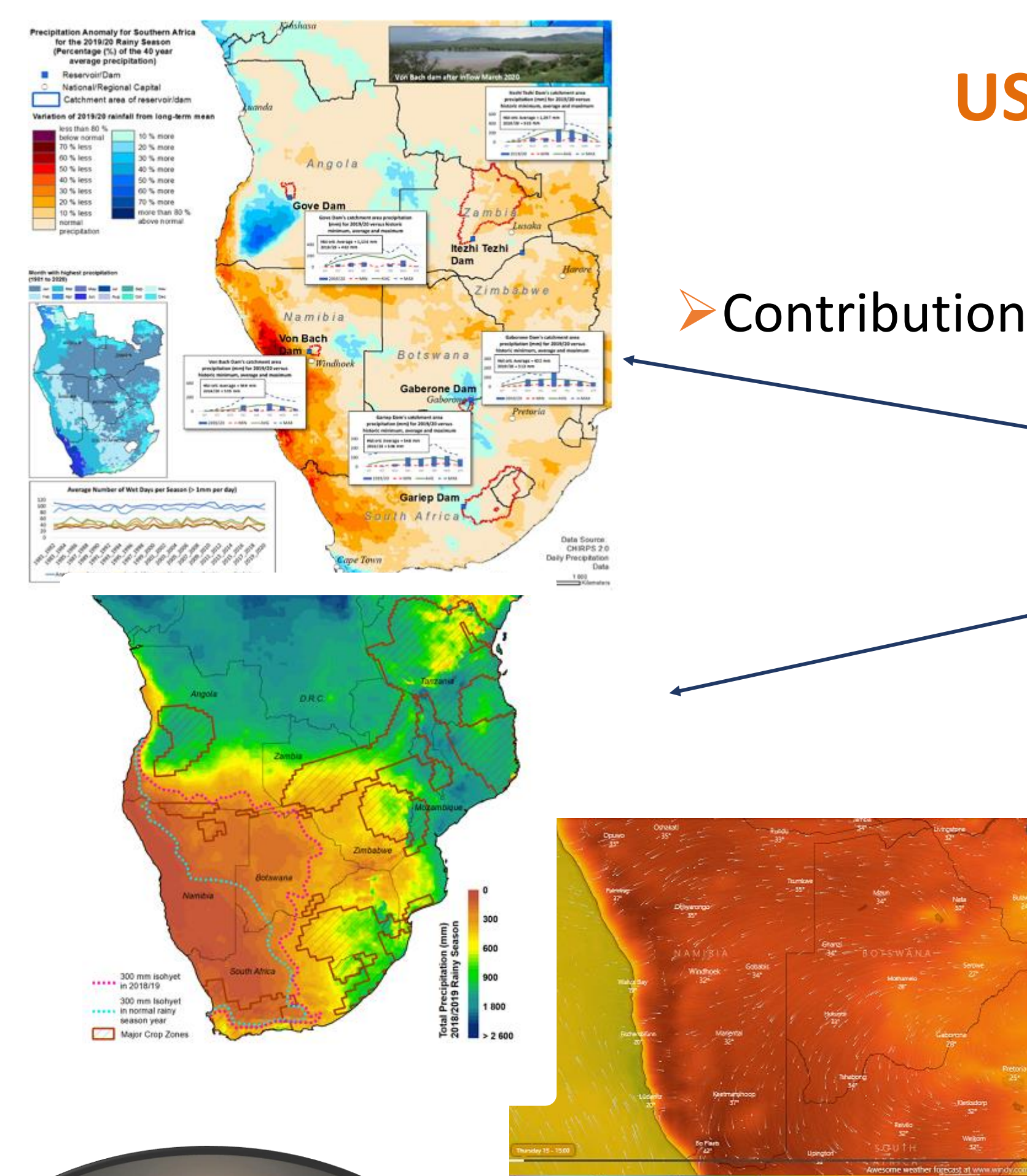
- 15mins
- 30mins
- 60 mins

2 transmission types:

- GSM/GPRS
- Satellite (Meteosat)

## USES AND APPLICATIONS

- Scientific research
- Contributions to WMO/FEWSNET/CHIRPS
- Product Development
- ❖ Fact Sheets
- ❖ Map of the month
- Media Broadcasting
- ❖ Radio
- ❖ Newspapers
- Business decision support
- General Information



## OUTLOOK

- Further development of web platform
- Geographical representation
- Enhanced data quality checks
- Integration with other data sources, i.e. forecasts, additional weather variables
- Partnerships with owners of AWSs for data exchange and strengthening of network