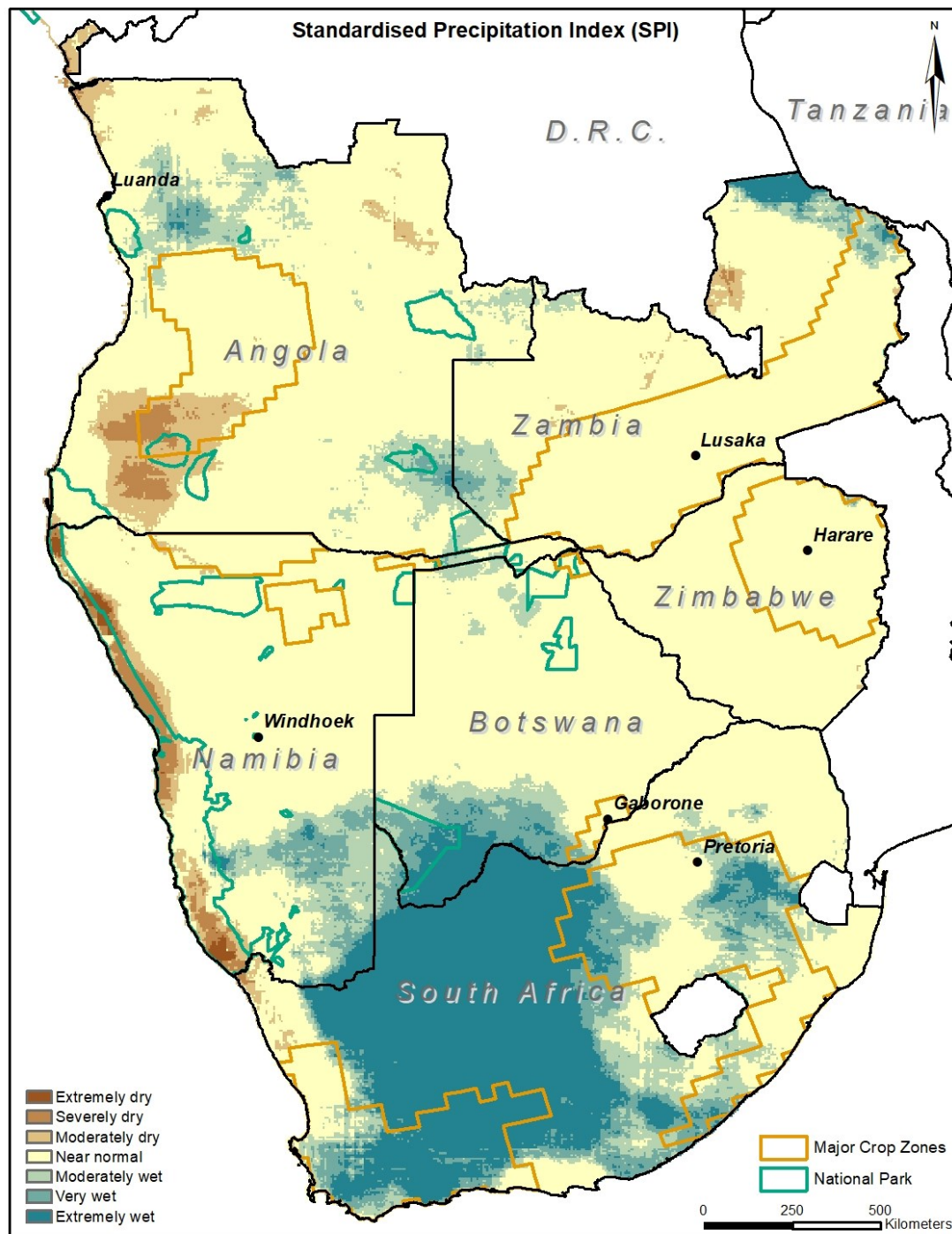
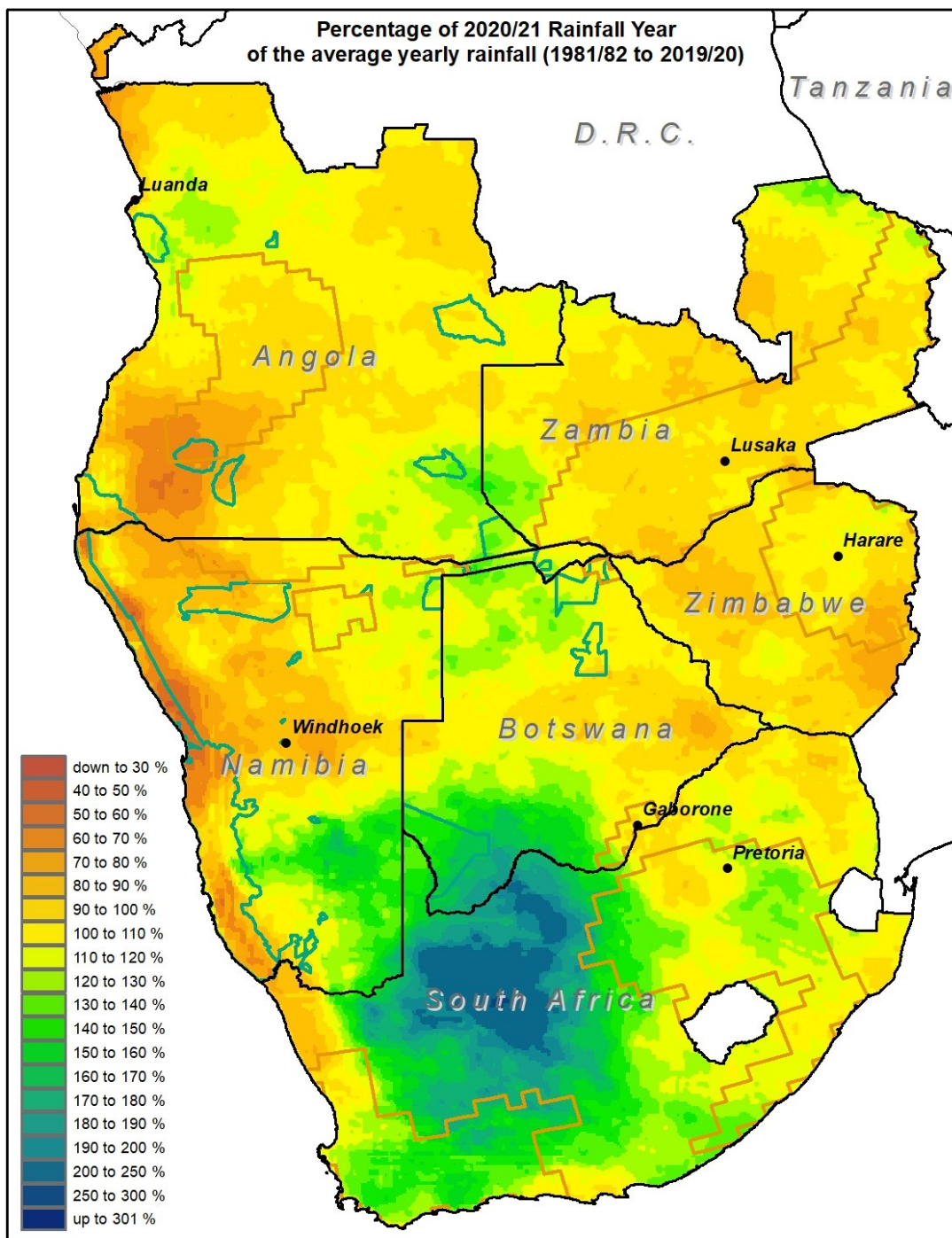


SASSCAL Info Map

2021/22 Rainfall Season of southern Africa



While much of central and eastern South Africa experienced an extremely wet rainfall season, most parts of southern Africa had, according to the SPI (Standardised Precipitation Index), had a normal rainfall year.

Angola

While most of Angola experienced an average rainfall year, the south western part of Angola continued to struggle with a very dry rainfall season. Central and parts of northern Angola also had below average rainfall. North-western and south-eastern Angola had a wet rainfall season.

Botswana

While the SPI suggests a normal to extremely wet year for Botswana, the average rainfall in the central and eastern part of Botswana was below average. North and south Botswana had above average rainfall.

Namibia

While the western coast of Namibia was categorized as moderately to extremely dry, parts of the south-eastern and north-eastern part of the country were moderately to extremely wet. Large parts of the north-western, eastern and central part of the country had below average rainfall.

South Africa

Most of South Africa had an extremely wet rainfall year. The western Cape was normal to partly severely dry. The north-eastern part and east coast had slightly below normal rainfall.

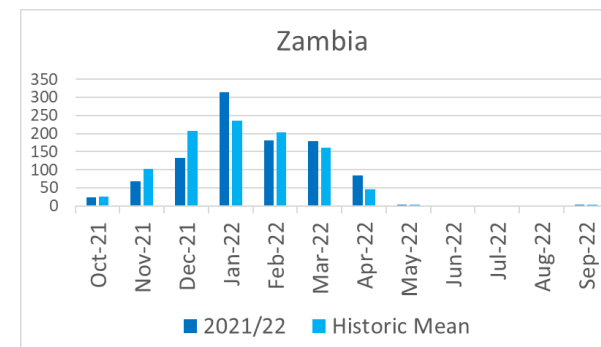
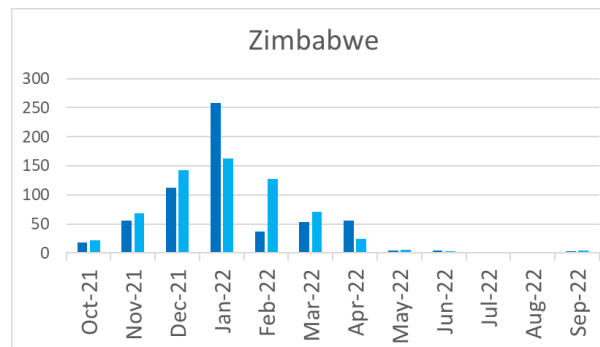
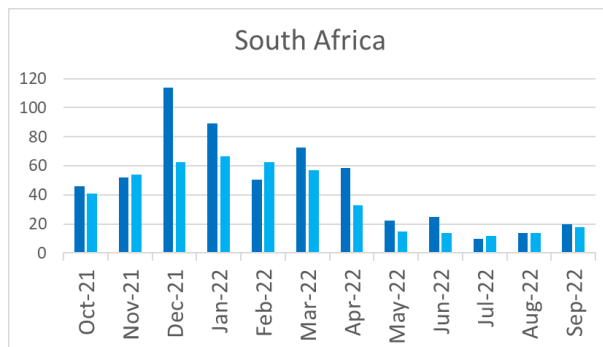
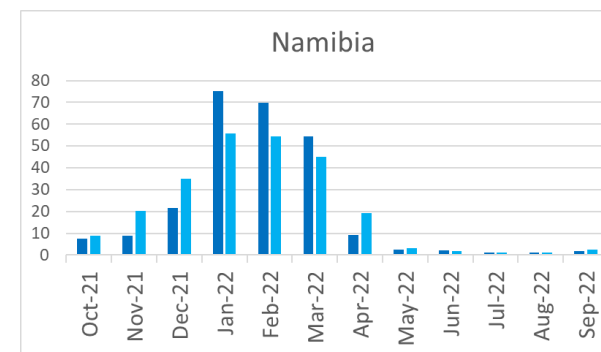
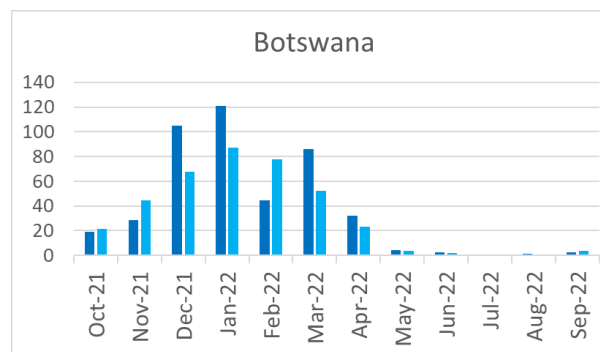
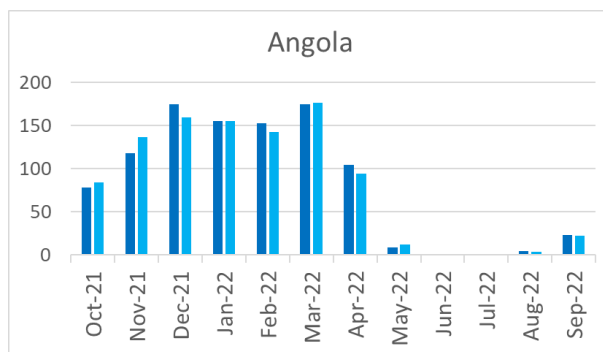
Zambia

Large areas of Zambia had below average rainfall, but according to the SPI a normal rainfall year. The south-western and north-eastern part of Zambia was moderately to extremely wet.

Zimbabwe

While scattered parts throughout Zimbabwe had below average rainfall, the SPI suggests a normal rainfall year.

Average Total Rainfall for 2021/2022 (mm)	
Angola	995
Botswana	447
Namibia	255
South Africa	573
Zambia	993
Zimbabwe	606



Data Source: CHC CHIRPS 2.0 precipitation data from 1981 to 2022

References:

1. Funk, C., Peterson, P., Landsfeld, M. et al. The climate hazards infrared precipitation with stations—a new environmental record for monitoring extremes. *Sci Data* 2, 150066 (2015). <https://doi.org/10.1038/sdata.2015.66>
2. WMO. 2012. Standardized Precipitation Index User Guide